

bematech 

ENTRADA: 100V~ - 240V~
 FREQUÊNCIA: 50/60Hz
 SAÍDA: 24V \square 2,5A
 MODELO: FON1110-RS

RoHS COMPLIANCE

N° S.: 

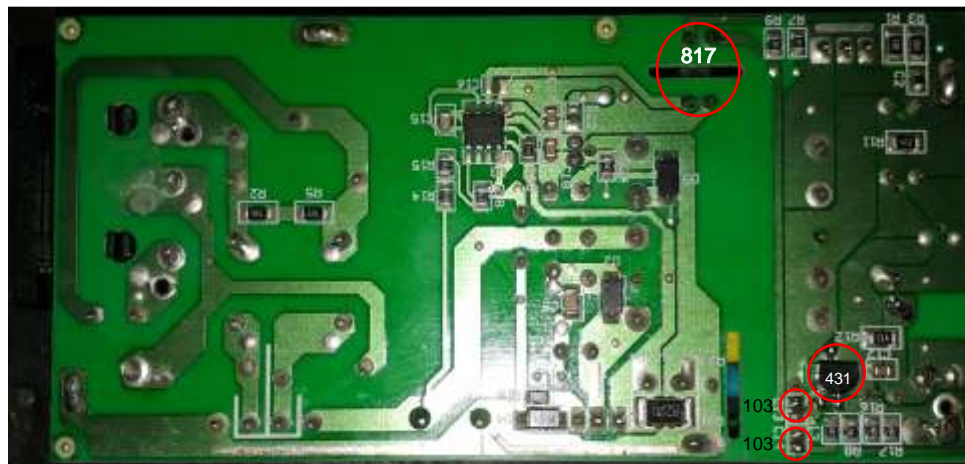


110 5201902018

PROD. POR CNPJ 25.312.273/0001-00 - INDÚSTRIA BRASILEIRA





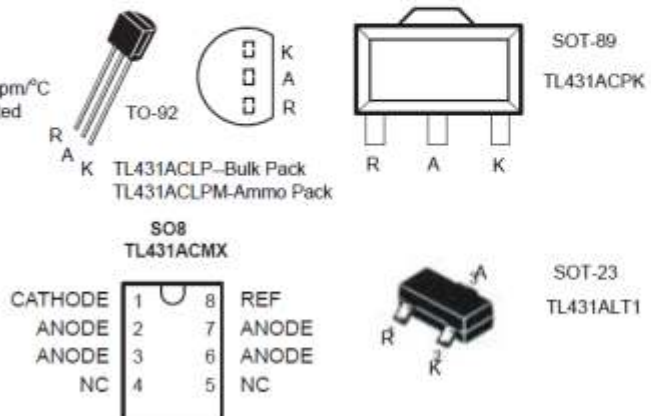


TL431A Adjustable Precision Shunt Regulator

FEATURES

- Programmable Output Voltage to 40V
- Low Dynamic Output Impedance 0.2 Ω
- Sink Current Capability of 0.1 mA to 100 mA
- Equivalent Full-Range Temperature Coefficient of 50 ppm/ $^{\circ}\text{C}$
- Temperature Compensated for Operation over Full Rated Operating Temperature Range
- Low Output Noise Voltage
- Fast Turn on Respons
- TO-92 or SOT-23 and SOT-89 ,SO8packages

PIN CONNECTIONS



DESCRIPTION